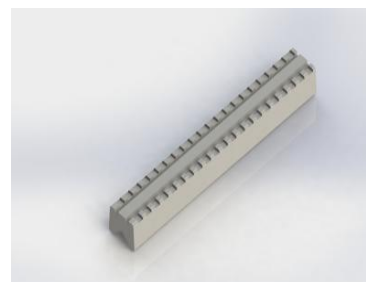
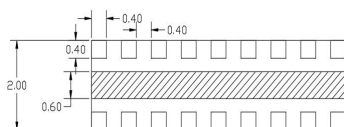
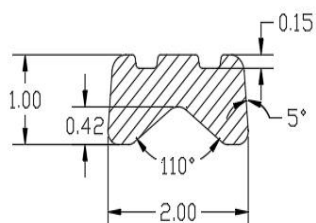




Code:38151

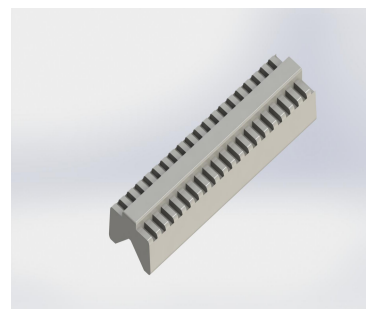
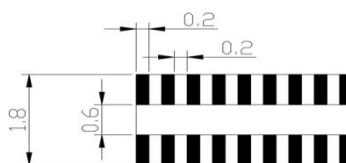
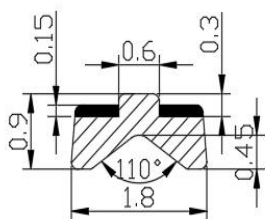
1号花丝 2x1



花纹凸起0.15mm

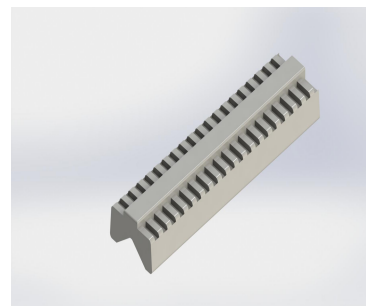
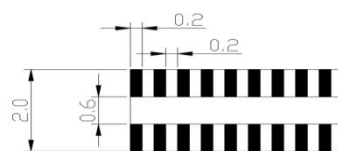
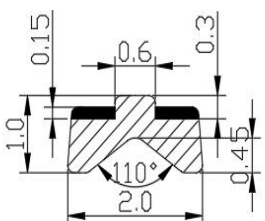
Code:9622110

2号花丝 1.8x0.9



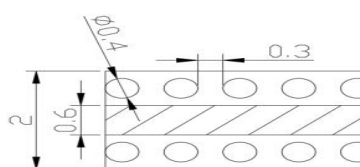
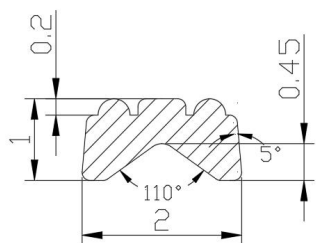
Code:9620

2号花丝 2X1



Code:71180011031

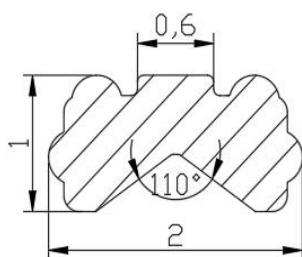
4号花丝 2x1



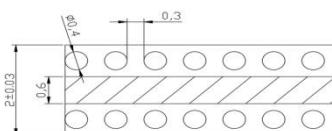


花丝系列
Pattern Series

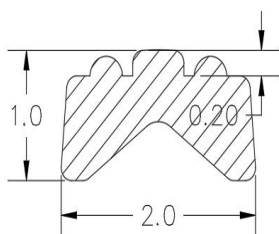
Code:2215



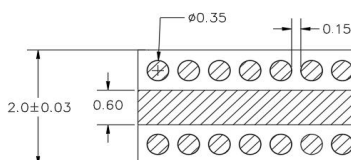
4号三面花丝 2x1



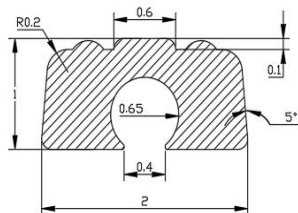
Code:71180011052



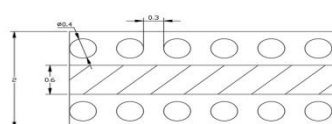
5号花丝 2x1



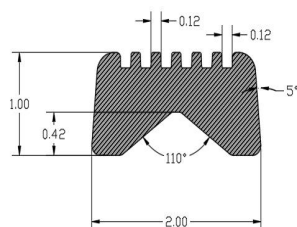
Code:19860524



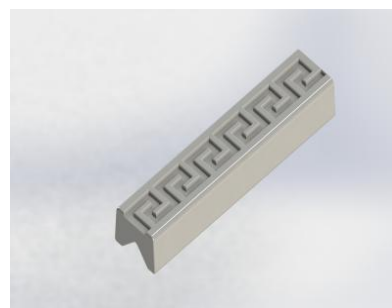
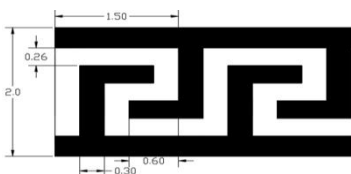
5号花丝鱼丝 2X1



Code:20170416



571花丝 2x1

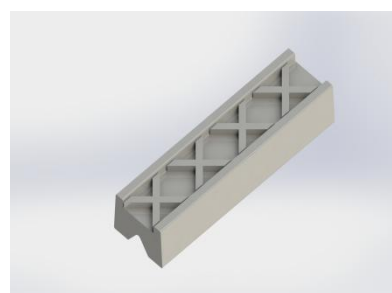
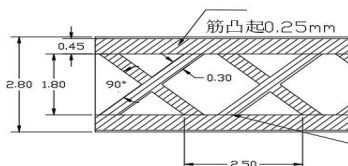
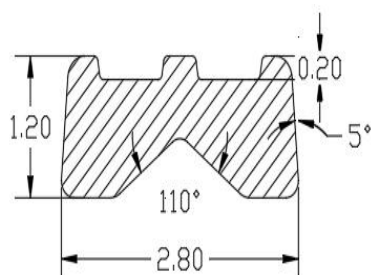




花丝系列
Pattern Series

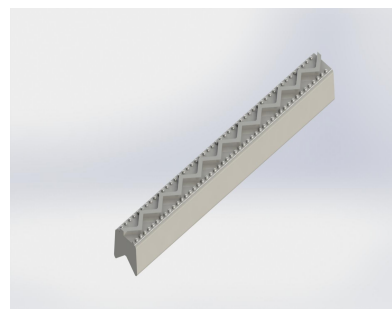
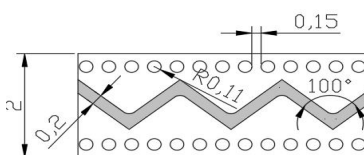
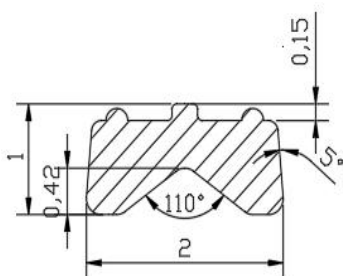
Code:19080702

X 花丝 2.8x1.2



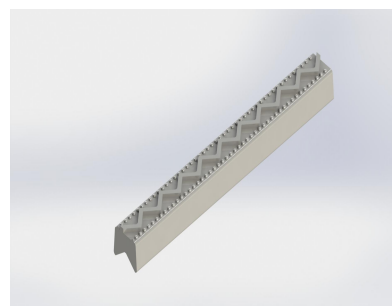
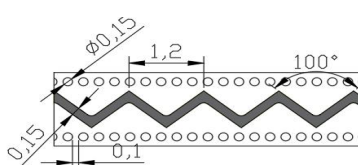
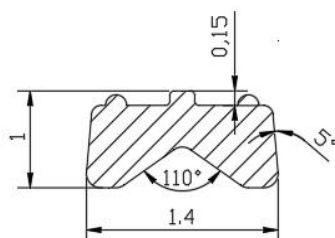
Code:9622124

W 花丝 2X1



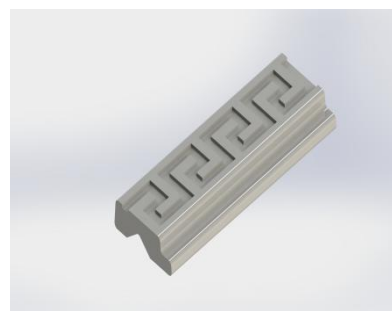
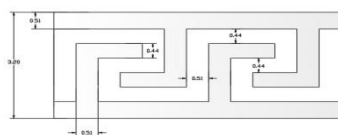
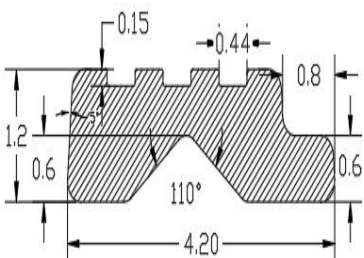
Code:9622118

W 花丝 1.4X1



Code:18026

571 花丝少一边 4.2x1.2

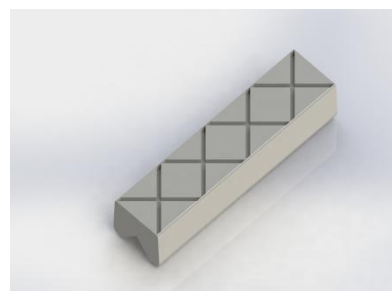
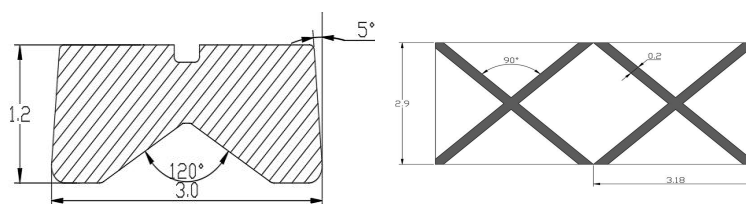




花丝系列
Pattern Series

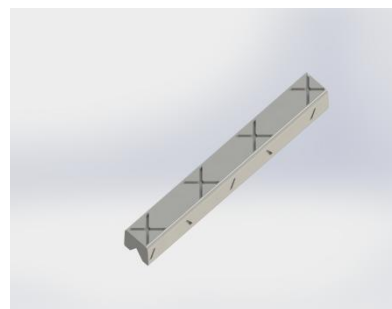
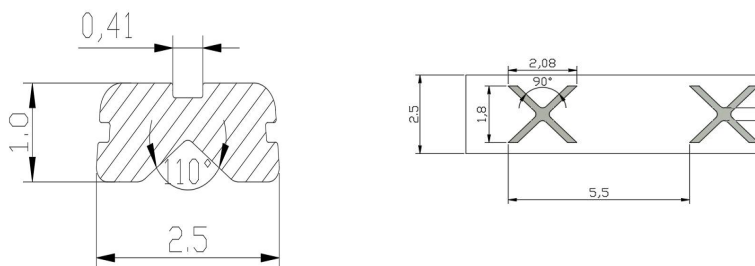
Code:2070418

X 花丝 3x1.2



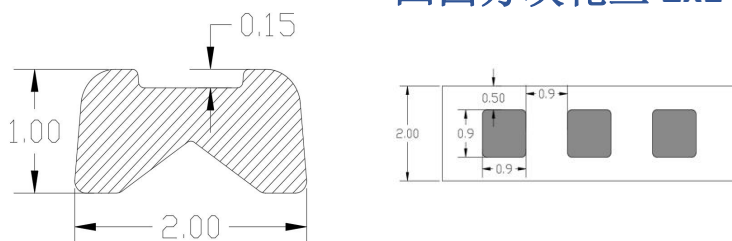
Code:201852

X 三面花丝 2.5x1



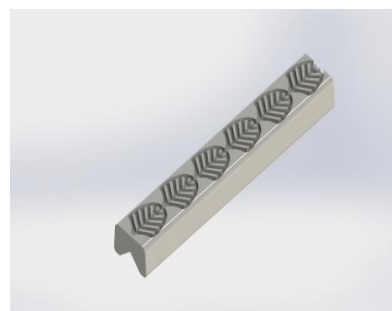
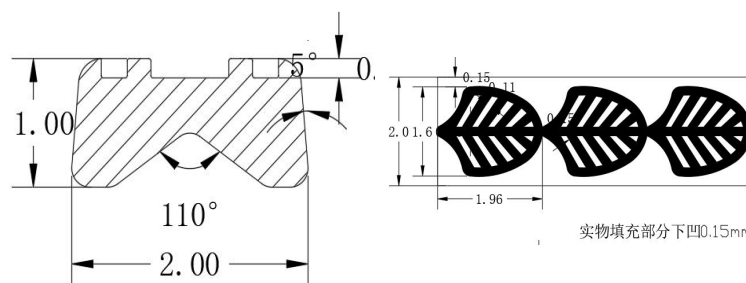
Code:381604211728

凹四方块花丝 2x1



Code:18825

芭蕉扇子花丝 2x1

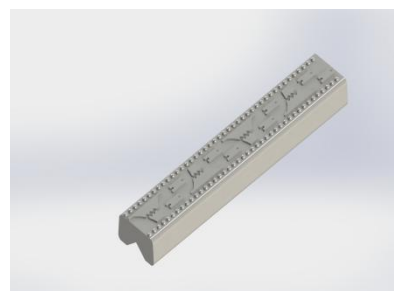
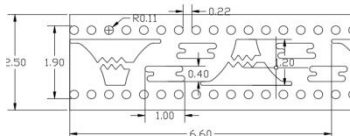
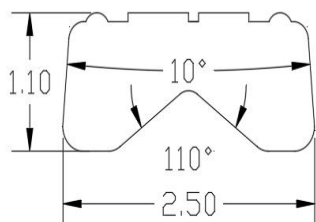




花丝系列
Pattern Series

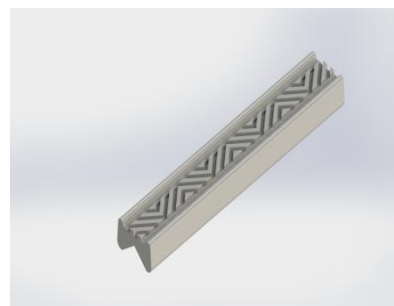
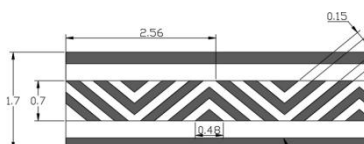
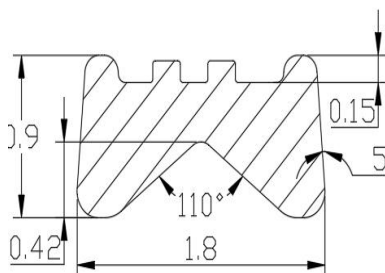
Code:19072202

宝塔花丝 2.5x1.1



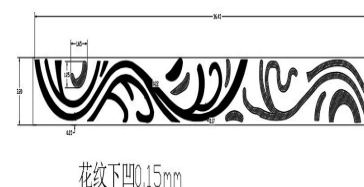
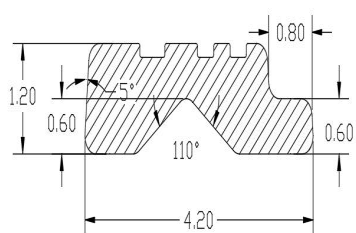
Code:18512

背上三角带筋花丝 1.8x0.9



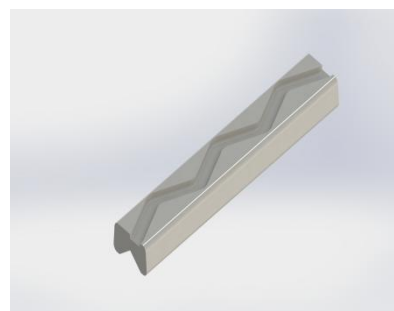
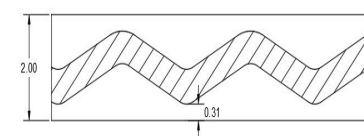
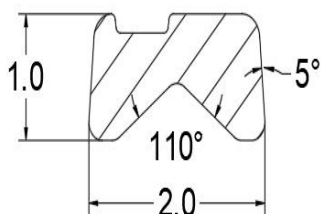
Code:18025

背上少一边龙花丝 4.2x1.2



Code:19091003

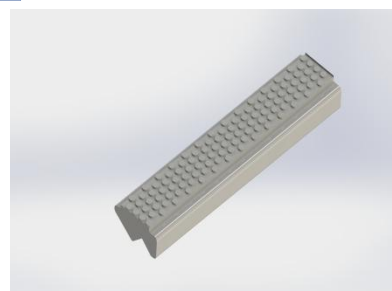
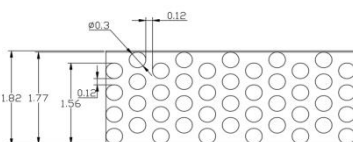
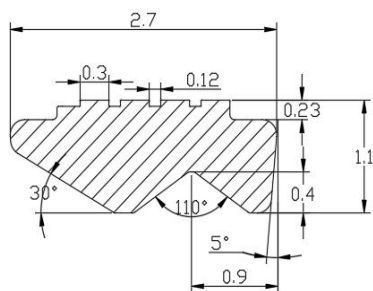
波浪花丝 2x1





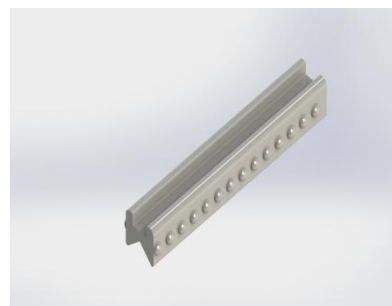
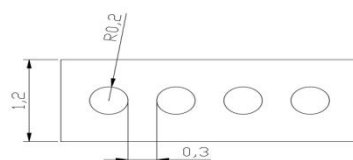
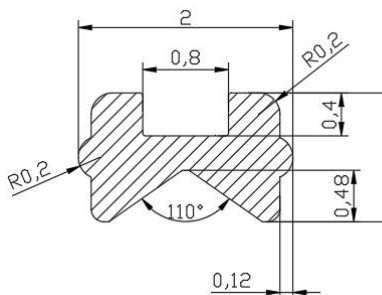
Code:21083101

槽口斜边小圆点花丝 2.7×1.1



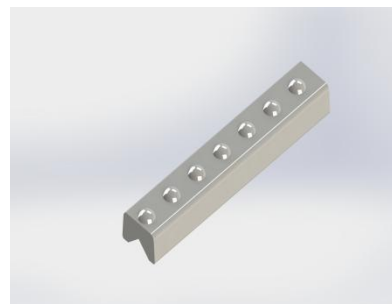
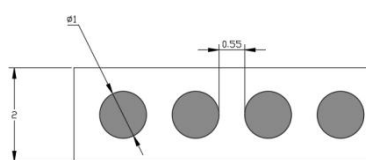
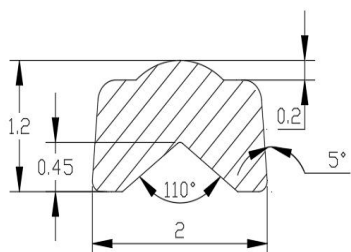
Code:2216

双面槽两面花丝 2×1.2



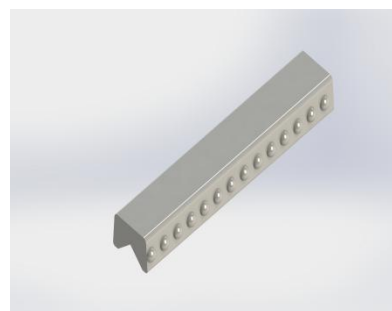
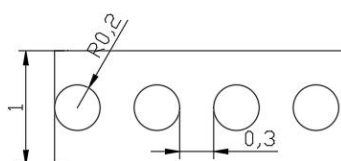
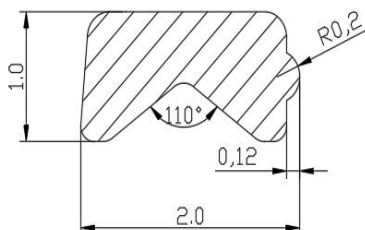
Code:20154

圆点花丝 2X1.2



Code:218112

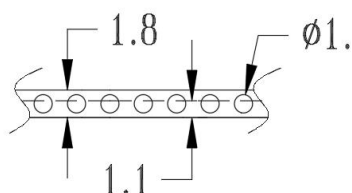
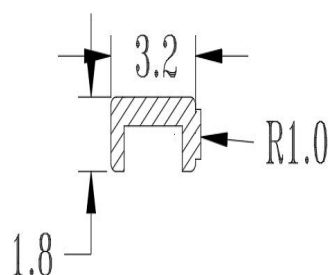
侧面圆点花丝 2×1





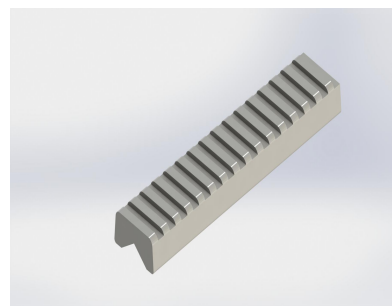
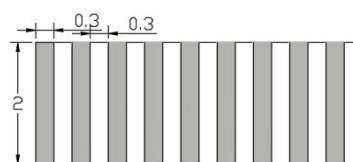
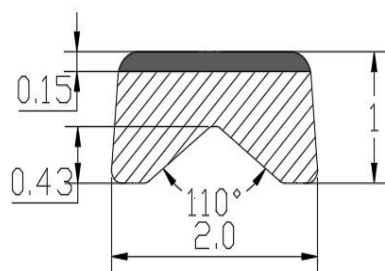
Code:19122101

侧面圆点花丝平底 3.4×1.8 (2.2×1.1)



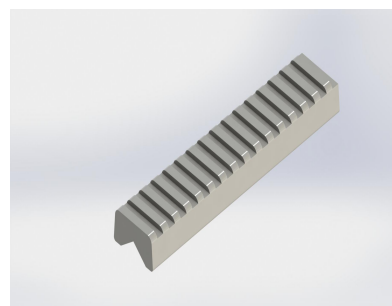
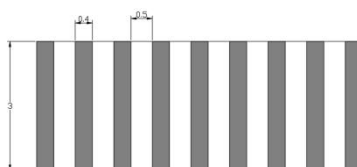
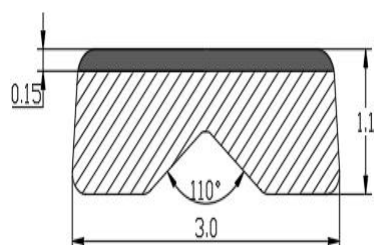
Code:5675282013

锉刀花丝 2×1



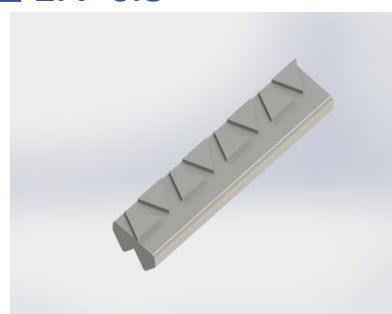
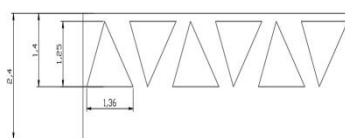
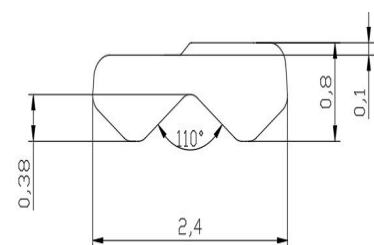
Code:20080801

锉刀花丝 3×1



Code:20090901

带斜度单边三角花丝 2.4×0.8

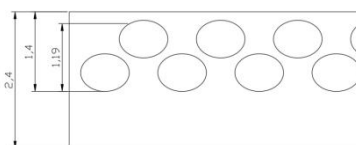
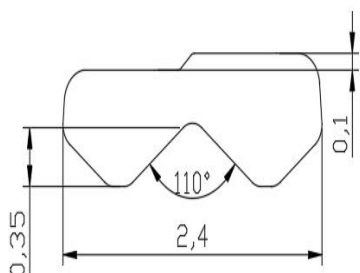




花丝系列
Pattern Series

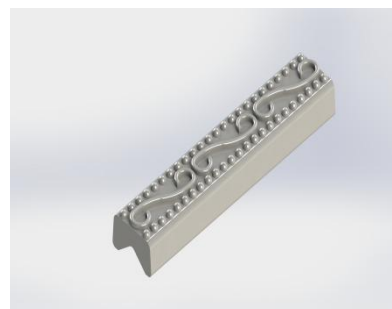
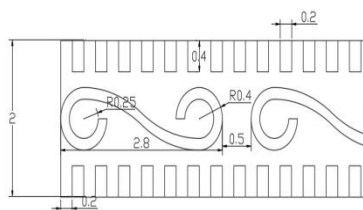
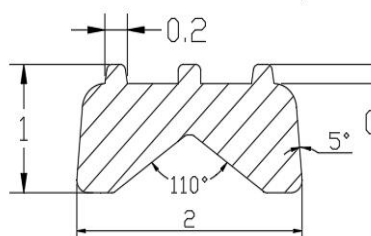
Code:20090803

带斜度单边圆点花花丝 2.4×0.8



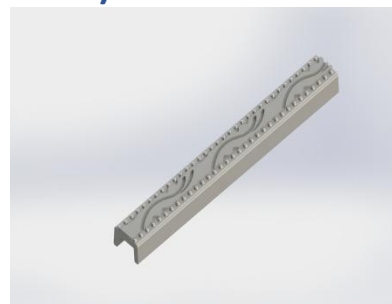
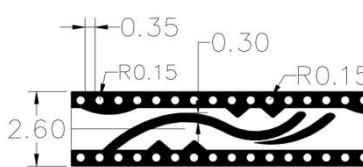
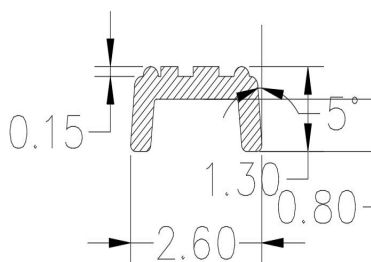
Code:9110621115

方背 S 花丝 2×1



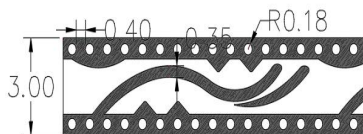
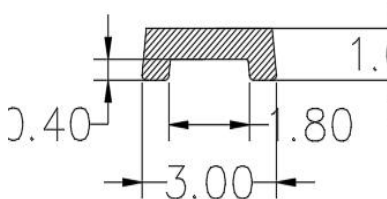
Code:2016062334

凤凰花丝 2.6X1.3(1.8X0.8)



Code:2016062334

凤凰花丝 3X1(1.8X0.4)

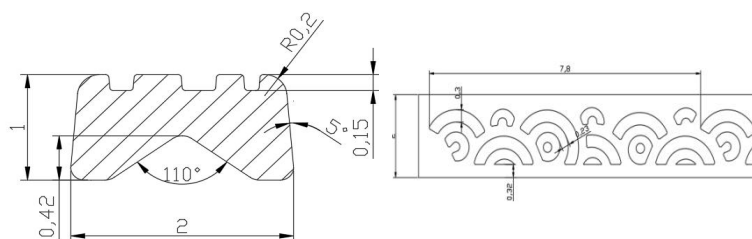




花丝系列
Pattern Series

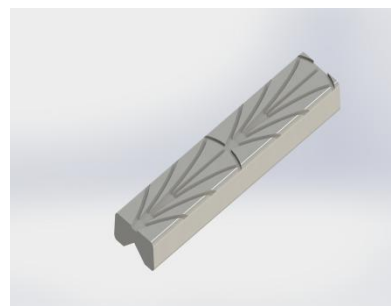
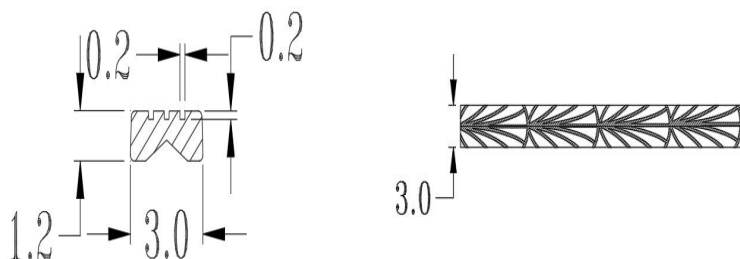
Code:19081003

海贝花丝 2x1



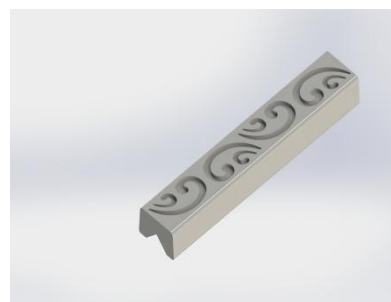
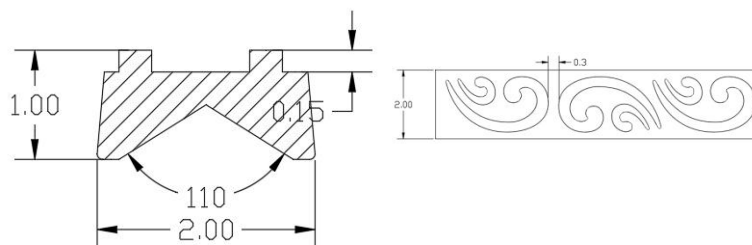
Code:201801

海草花丝 3x1.2



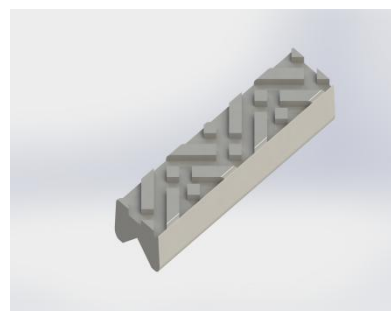
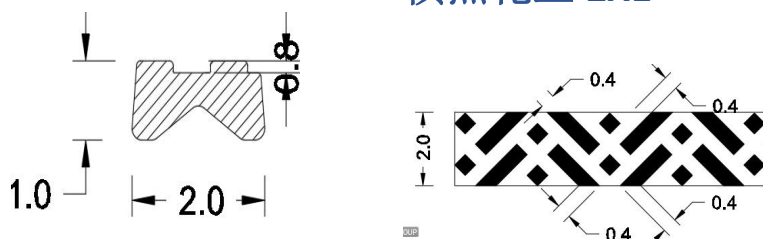
Code:110564

海鸥花丝 2X1



Code:711800110545

横点花丝 2X1

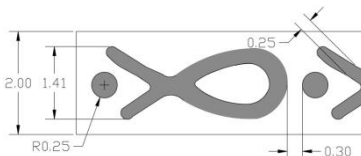
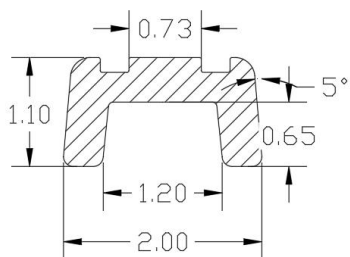




花丝系列
Pattern Series

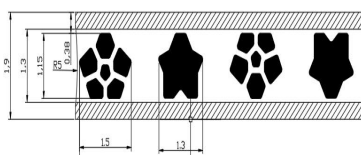
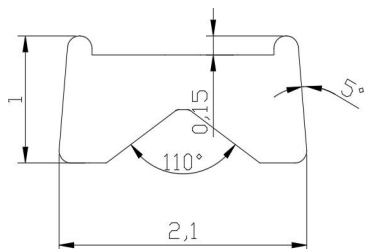
Code:20170922

花瓶花丝 2x1.1



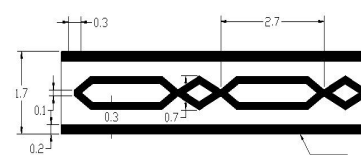
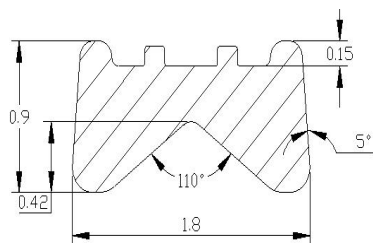
Code:201705

皇冠花丝 2.1x1



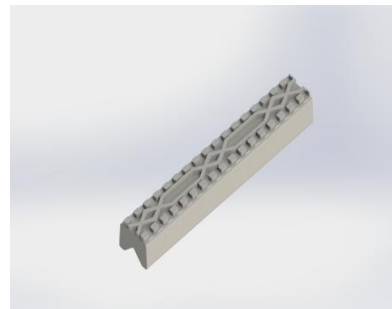
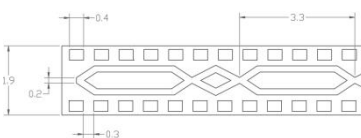
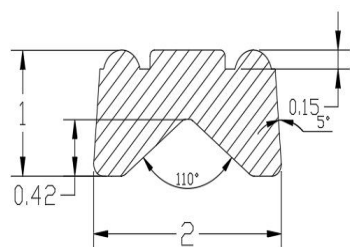
Code:18511

鸡蛋带筋花丝 1.8x0.9



Code:962212

鸡蛋花丝 2x1

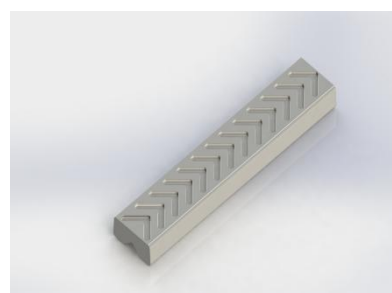
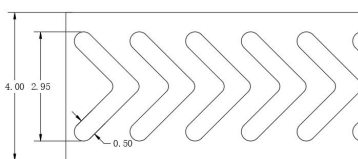
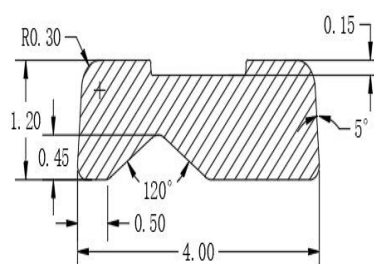




花丝系列
Pattern Series

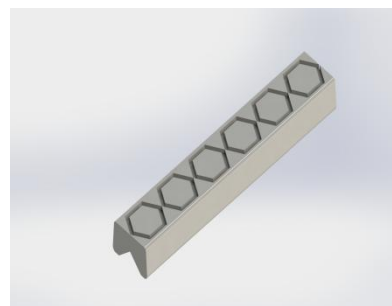
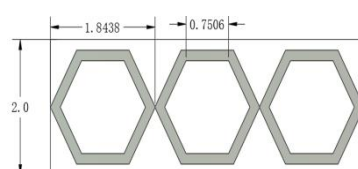
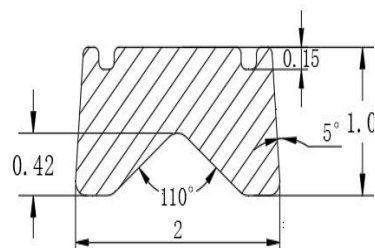
Code:20170908

箭头花丝 4×1.2



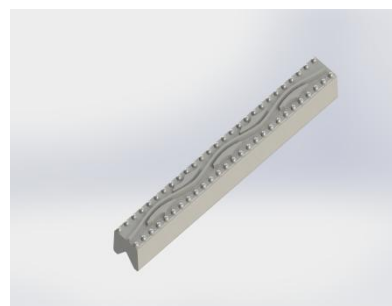
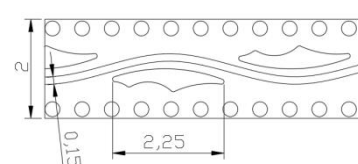
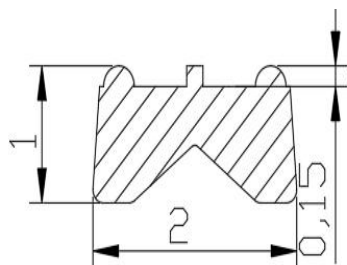
Code:25431

六角花丝 2X1



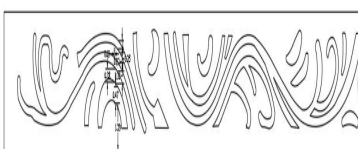
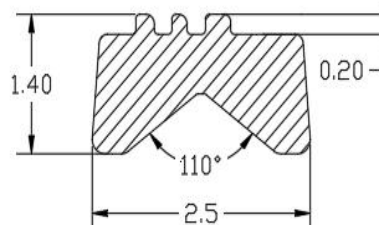
Code:381604211723

龙凤花丝 2x1



Code:166487114

龙花丝 2.5x1.4

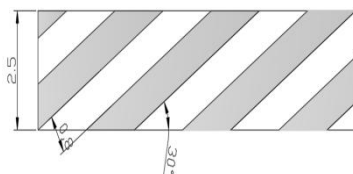
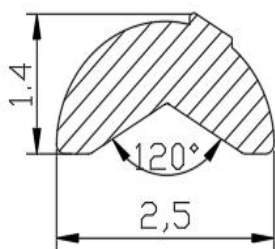




花丝系列
Pattern Series

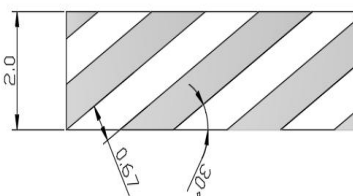
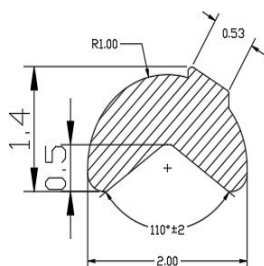
Code:20173411

麻花花丝 2.50×1.4



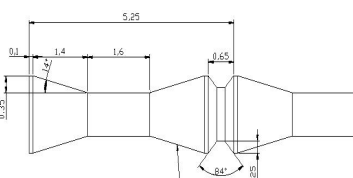
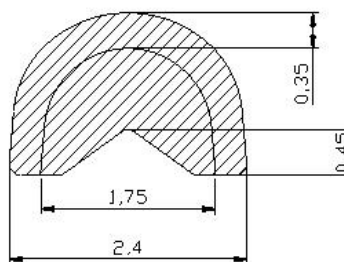
Code:201764

麻花花丝 2x1.4



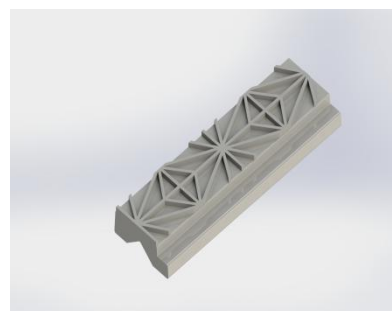
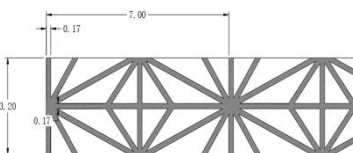
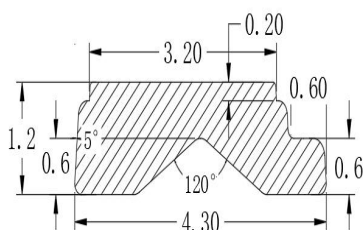
Code:20171012

毛竹花丝 2.2×1.5



Code:201810221

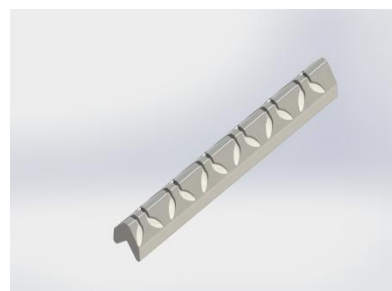
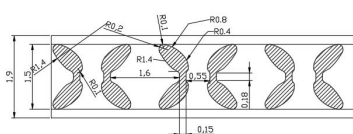
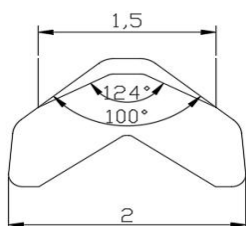
米字花丝少一边 4.3×1.2





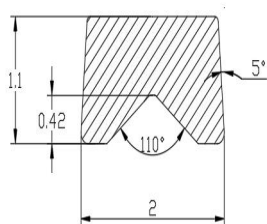
Code:20170818

三角背蝴蝶花丝 2×1.25



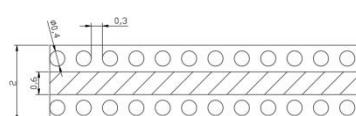
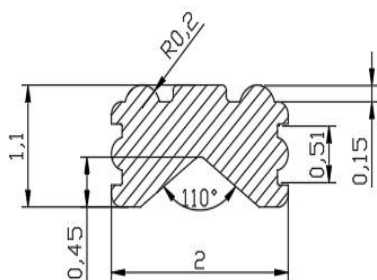
Code:20441

三角花丝 2X1.1



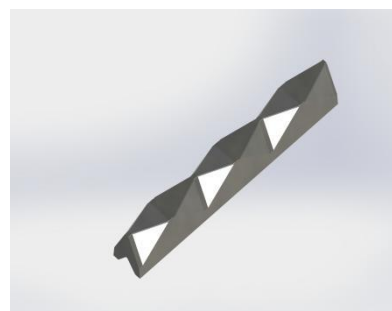
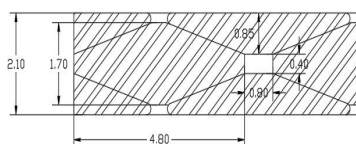
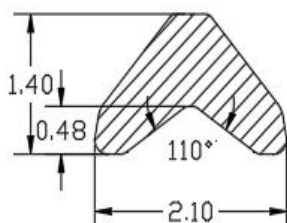
Code:2215

三面带筋 4号花丝 2×1



Code:218725

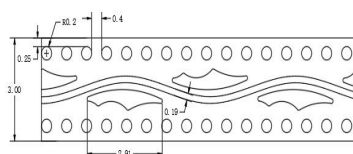
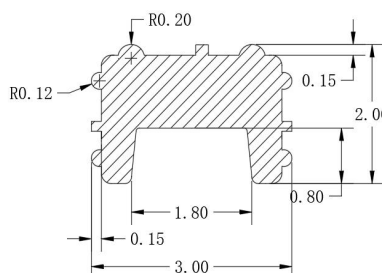
三面菱形 2.1×1.4





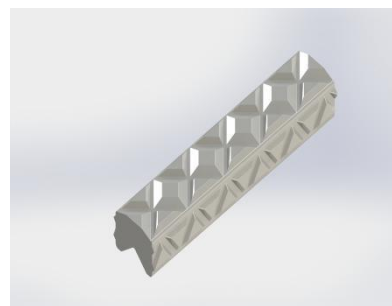
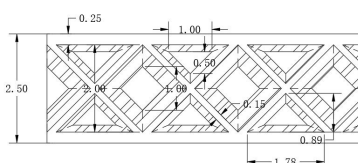
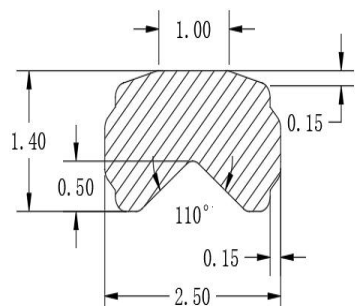
Code:20170927

三面龙凤花丝 3x2(1.8x0.8)



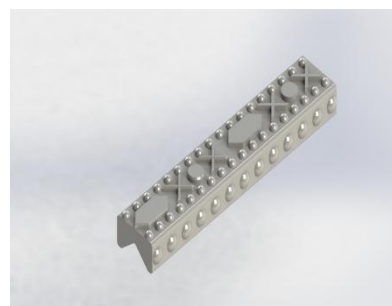
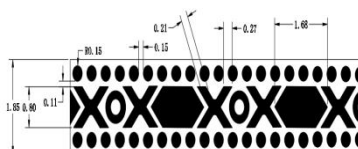
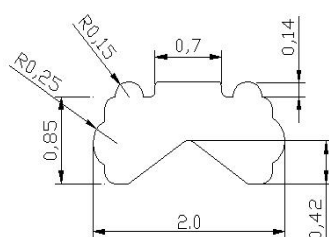
Code:180724

三面小钻石花丝 2.5x1.4



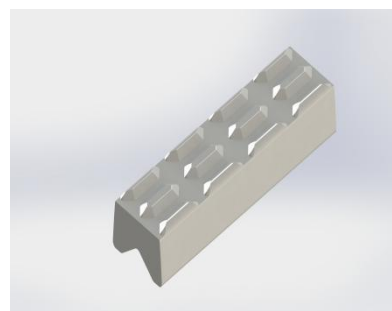
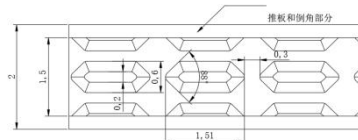
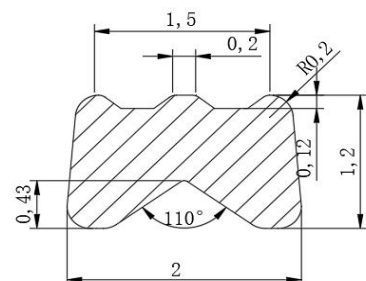
Code:20445

三面油压花丝 2x1



Code:19052401

三条菱形花丝 2x1.2

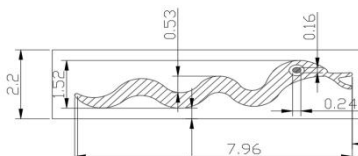
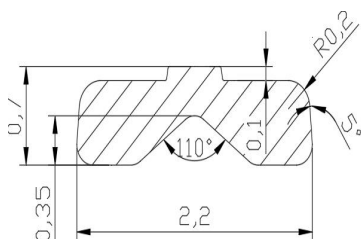




花丝系列
Pattern Series

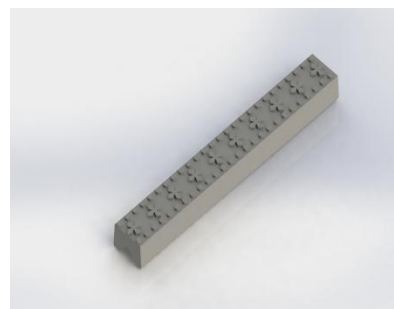
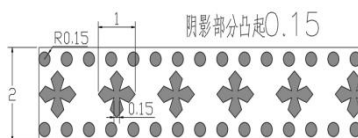
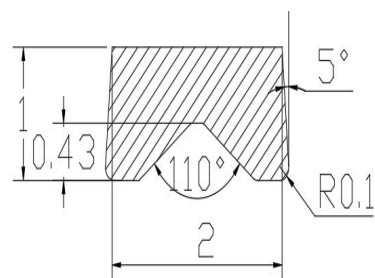
Code:19091601

蛇花丝 2.2x0.7



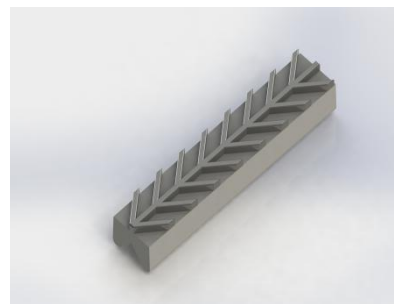
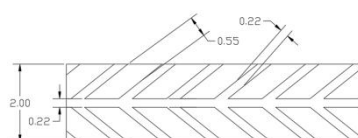
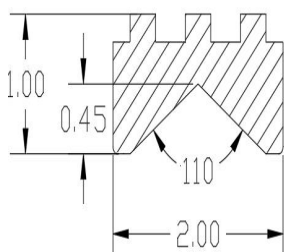
Code:58472

十字花丝 2X1



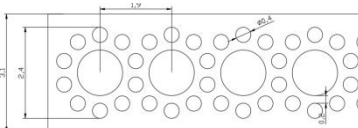
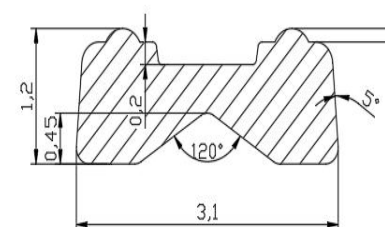
Code:22365

树叶花丝 2X1



Code:19103101

太阳花丝 3.1x1.2

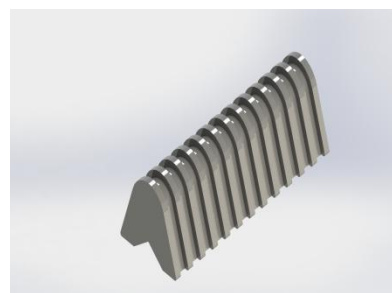
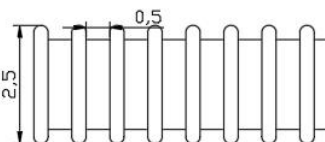
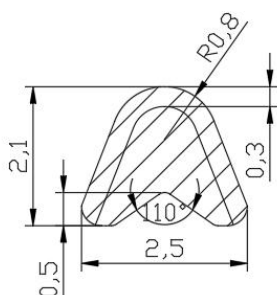




花丝系列
Pattern Series

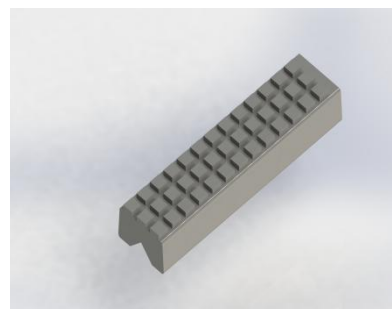
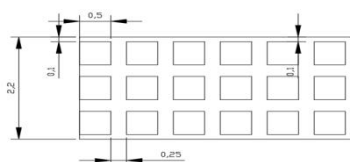
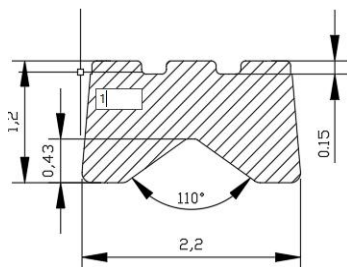
Code:5675282012

梯形锉刀 2.5x2.1



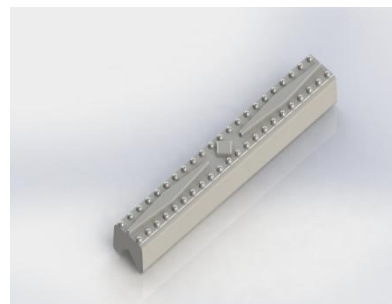
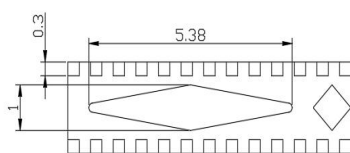
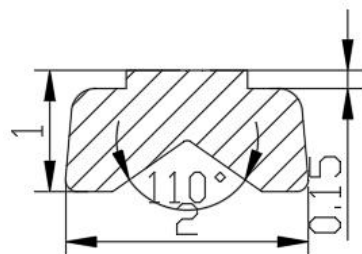
Code:19082902

凸方块 2.2X1.2



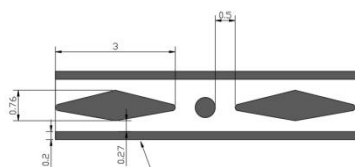
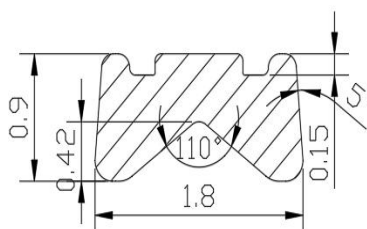
Code:17713171555

凸菱形 2X1.1



Code:20180528

凸菱形带筋花丝 1.8X0.9

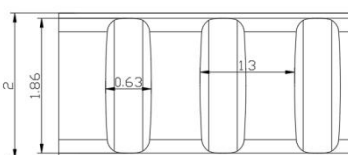
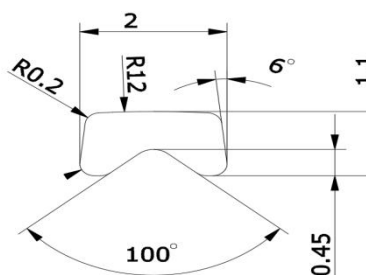




花丝系列
Pattern Series

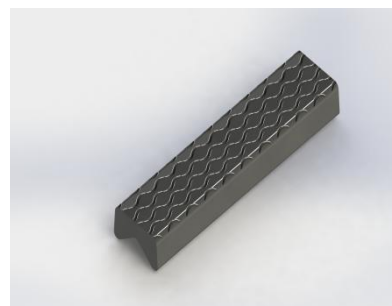
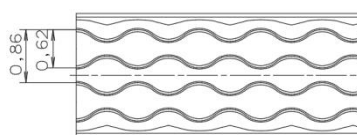
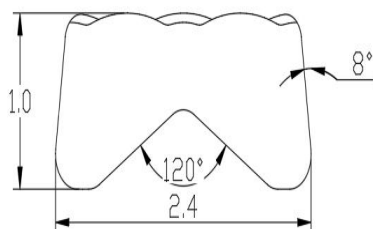
Code:19101102

推板锉刀花丝 2×1.1



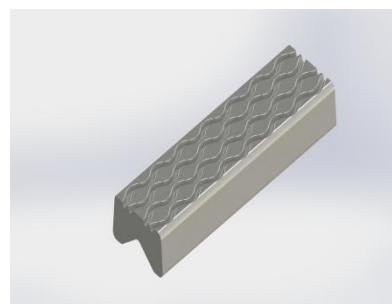
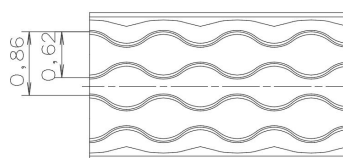
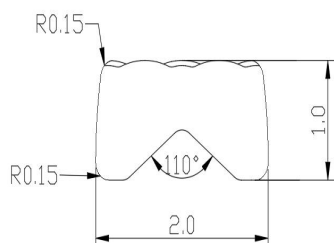
Code:20200418

弯线条花丝 2.4×1



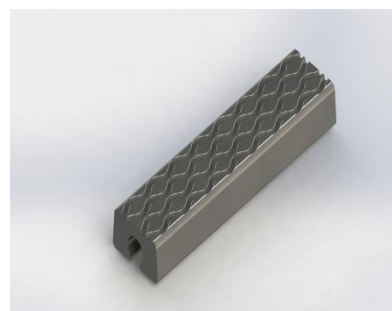
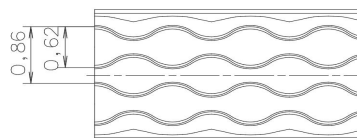
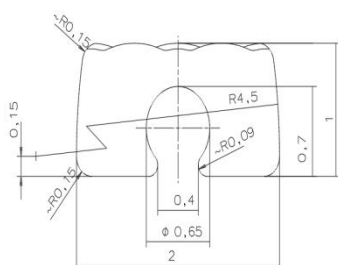
Code:181208

弯线条花丝 2x1



Code:190102

弯线条鱼丝花丝 2x1

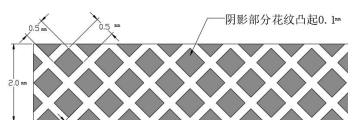
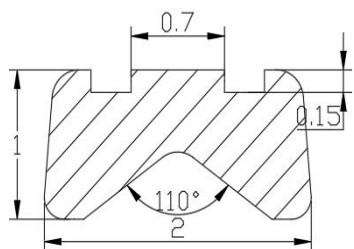




花丝系列
Pattern Series

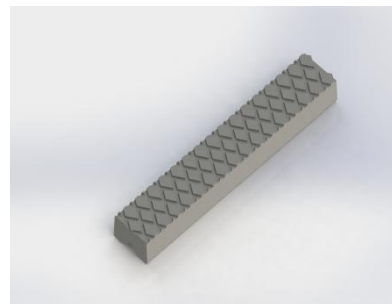
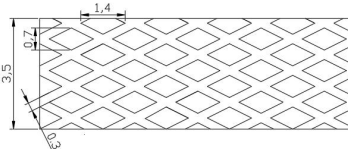
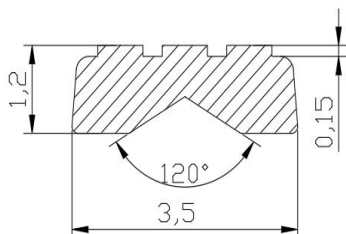
Code:860526

网格花丝 2x1



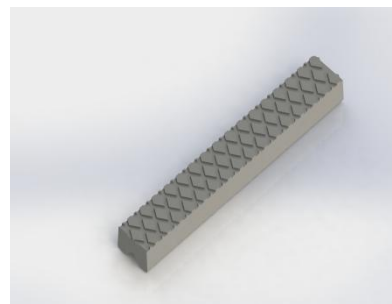
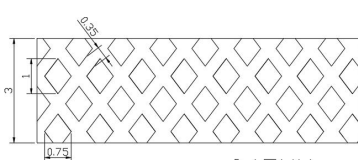
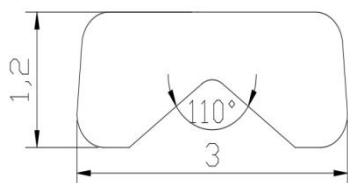
Code:6214305

网格花丝 3.5X1.2



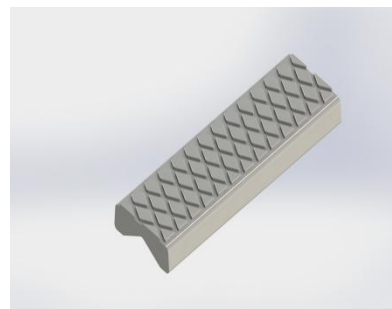
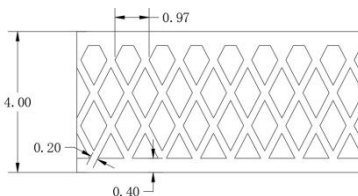
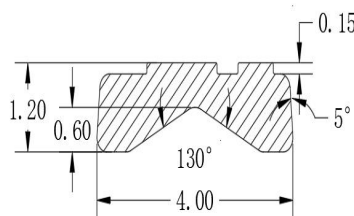
Code:0012345

网格花丝 3x1.2



Code:2018524

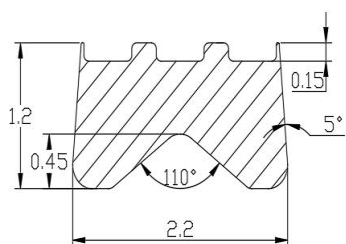
网格花丝 4x1.2



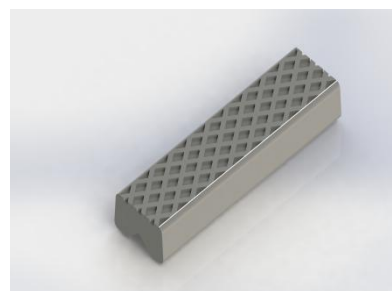
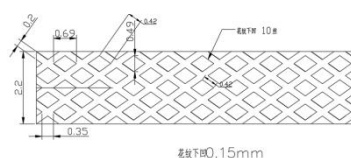


花丝系列
Pattern Series

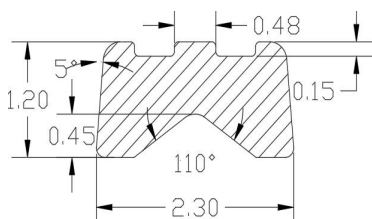
Code:6214304



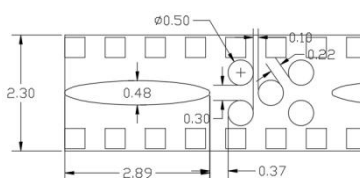
网状花丝 2.2X1.2



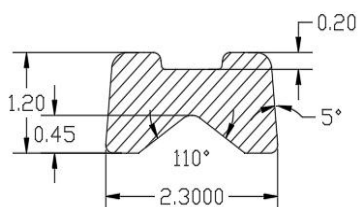
Code:291708733624



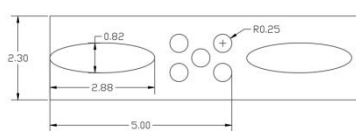
五点花丝 2.3x1.2



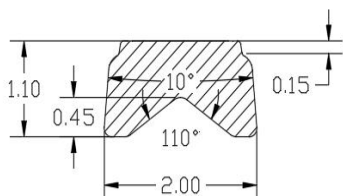
Code:19120304



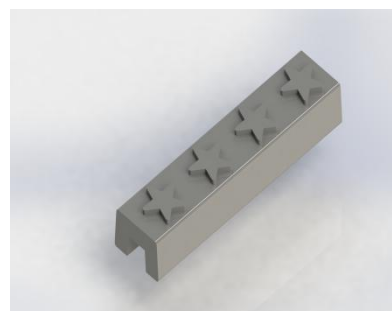
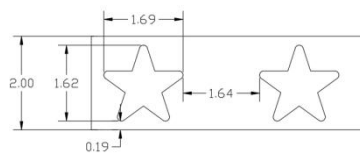
五点花丝圆点下凹 2.3x1.2



Code:2041



五角星花丝 2x1.1

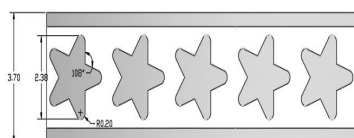
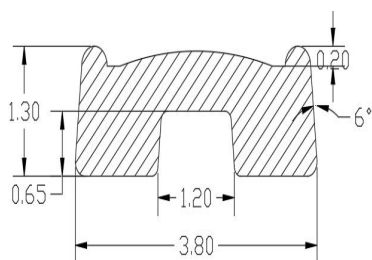




花丝系列
Pattern Series

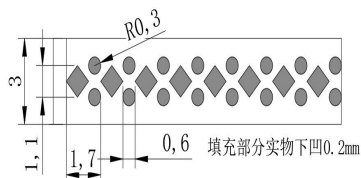
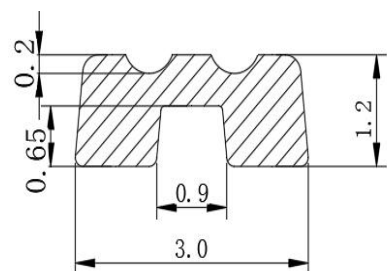
Code:18062

五角星平底 3.8x1.3(1.2x0.65)



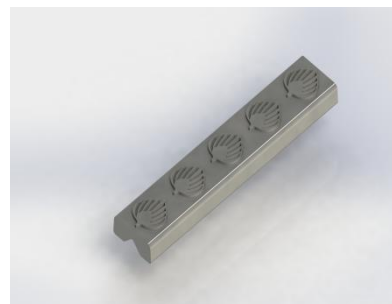
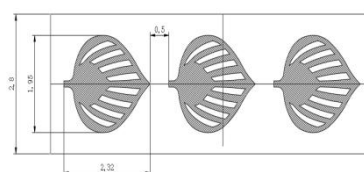
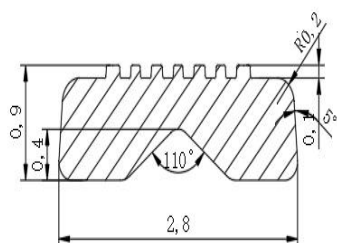
Code:20111402

下凹菱形圆点花丝 3x1.2 (0.9x0.65)



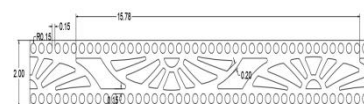
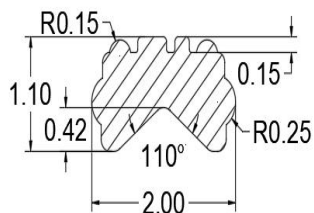
Code:19070402

仙桃花丝 2.8x0.9



Code:19312

小太阳花丝 2x1.1

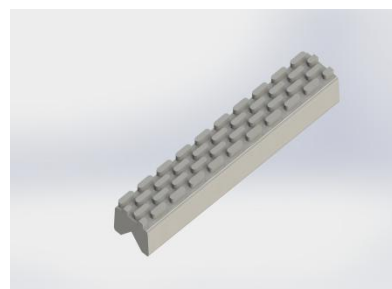
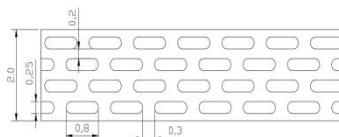
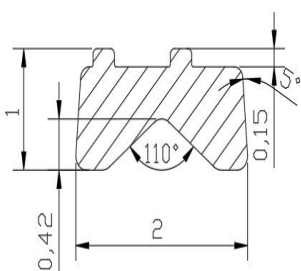




花丝系列
Pattern Series

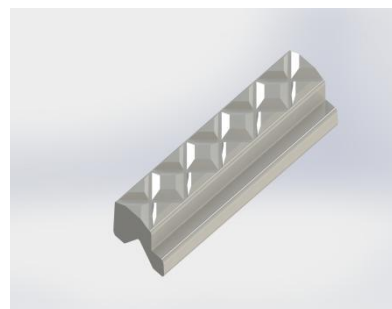
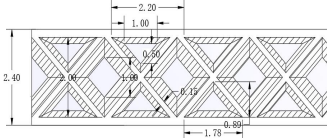
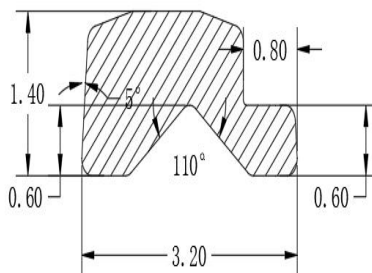
Code:621432

小鱼鳍花丝 2x1



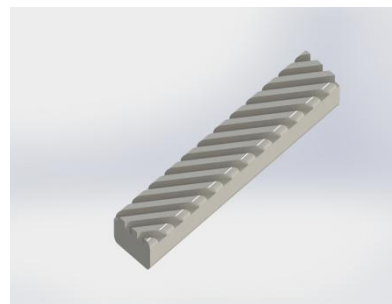
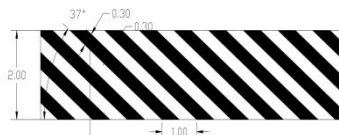
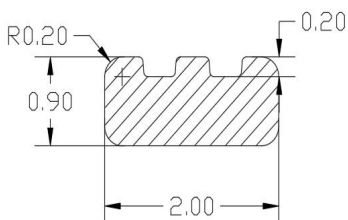
Code:20180901

小钻石少一边花丝 3.2x1.4



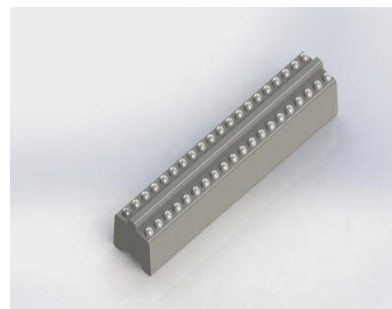
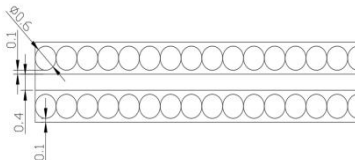
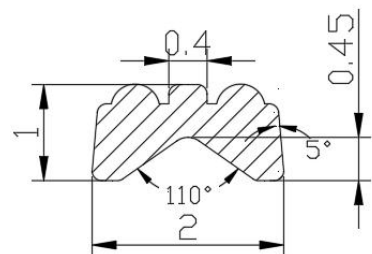
Code:1810031

斜锉刀花丝无槽 2x0.9



Code:711800101

新 2 号花丝 2x1

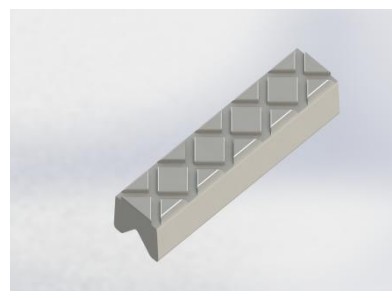
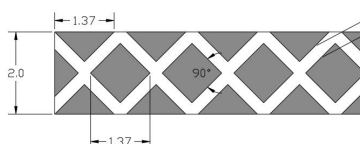
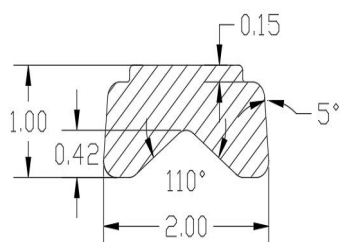




花丝系列
Pattern Series

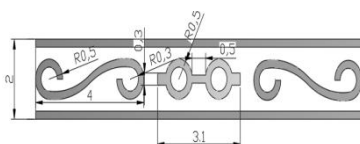
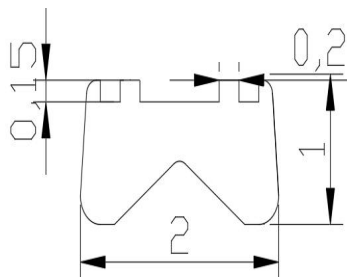
Code:20170721

斜方块 2X1



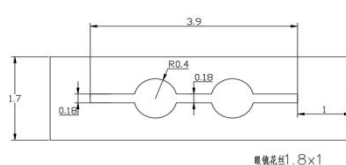
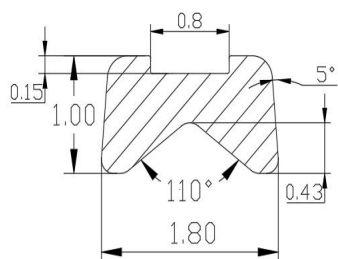
Code:711800110553

眼镜花丝 2.1X1.1



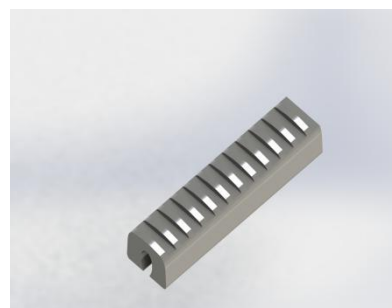
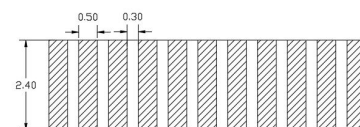
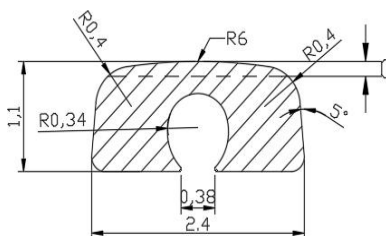
Code:20174

眼镜花丝 1.8x1



Code:201846

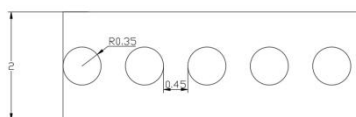
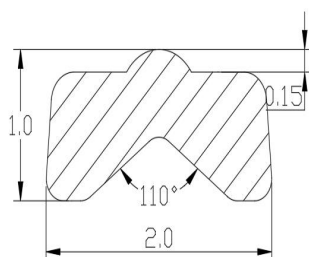
鱼丝锉刀 2.4x1.1





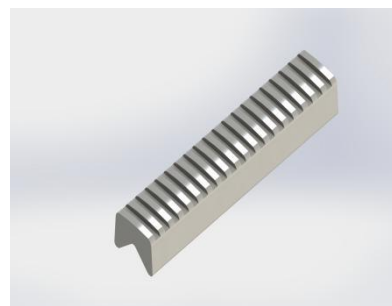
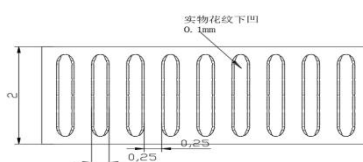
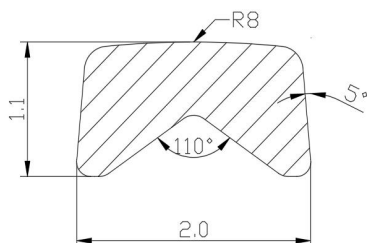
Code:20154

圆点花丝 2×1



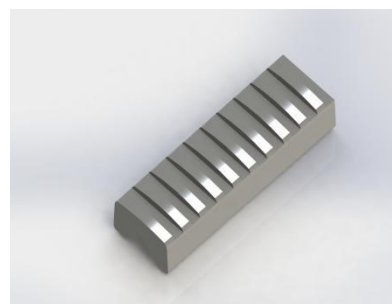
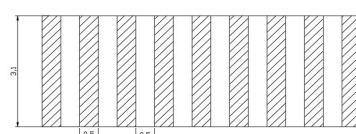
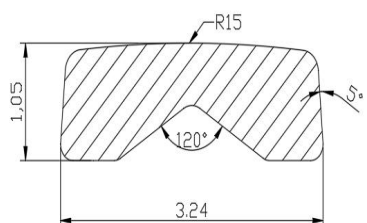
Code:2020061501

圆弧锉刀花丝 2X1.1



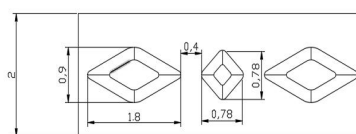
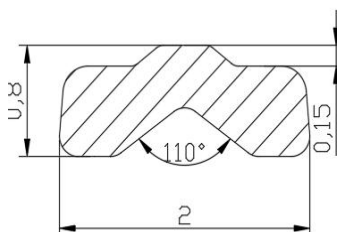
Code:181228

圆弧锉刀花丝 3.2×1.05



Code:20062002

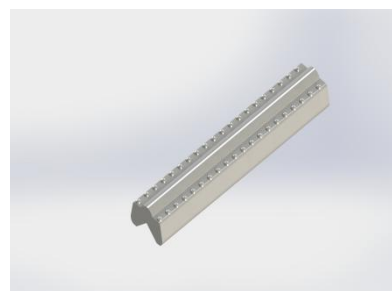
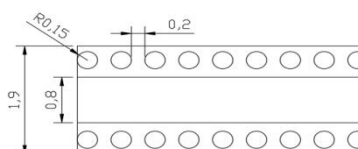
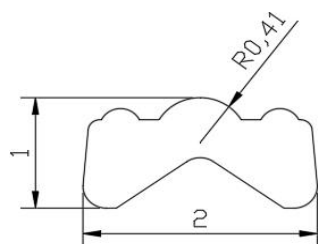
圆弧菱形花丝 2×0.8





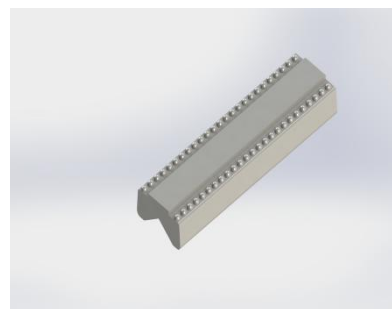
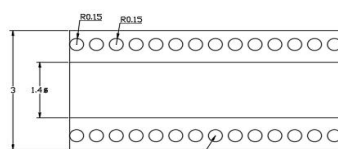
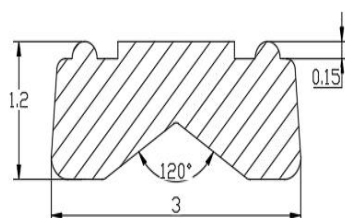
Code:962211

9 号花丝



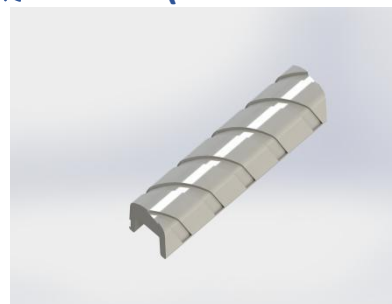
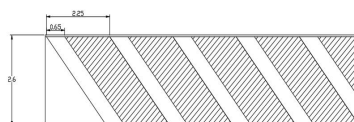
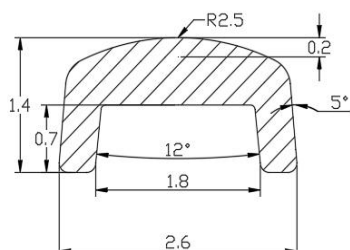
Code:19060701

11 号花丝 3x1.2 筋 1.4



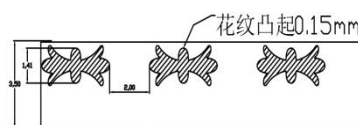
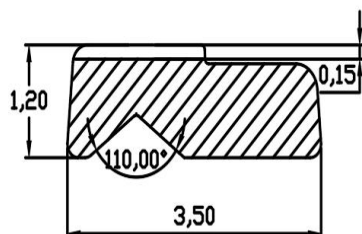
Code:19120901

不锈钢麻花花丝平底 2.6x1.4(1.8x0.7)



Code:20100703

枫叶花丝少一边槽单边 3.5x1.2

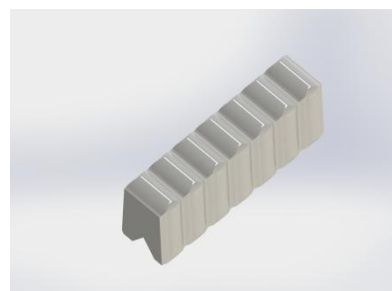
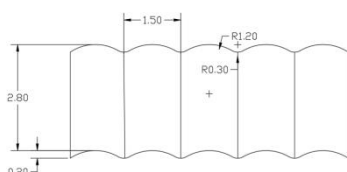
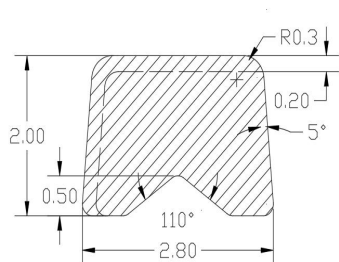




花丝系列
Pattern Series

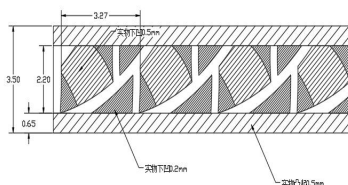
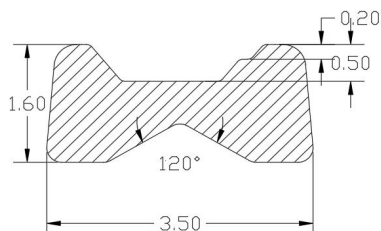
Code:19091901

两面锉刀花丝 2.8x2



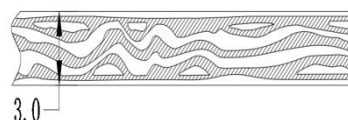
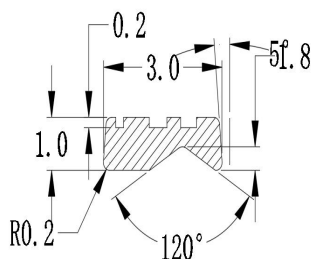
Code:20080101

菱形 X 花丝 3.5x1.6



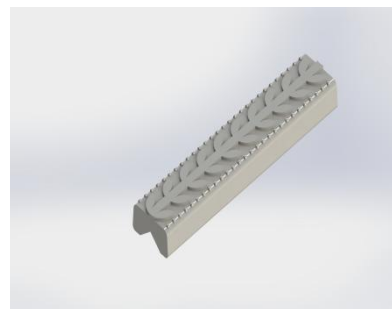
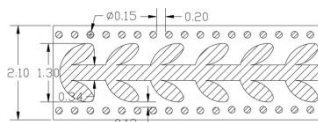
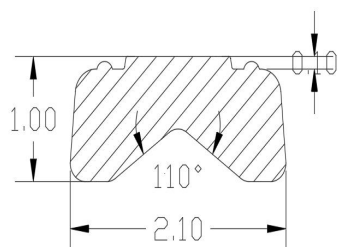
Code:19082702

山外有山花丝 3x1



Code:20081001

水草花丝 2.1x1

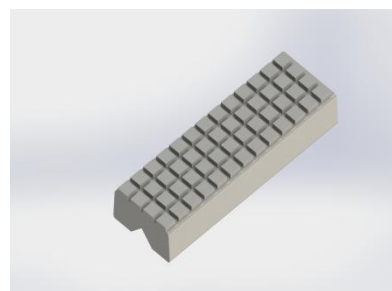
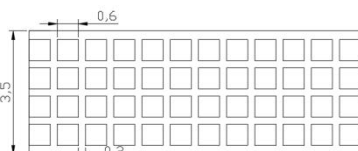
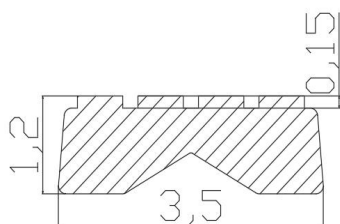




花丝系列
Pattern Series

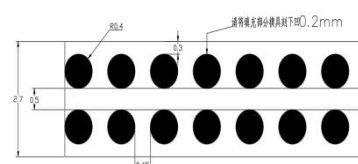
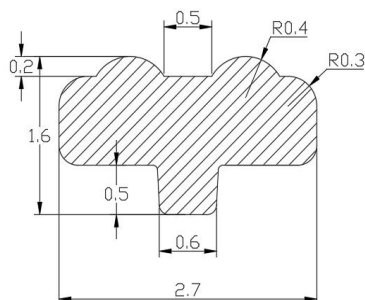
Code:711800110549

凸方块花丝 3.5X1.2



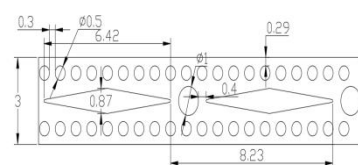
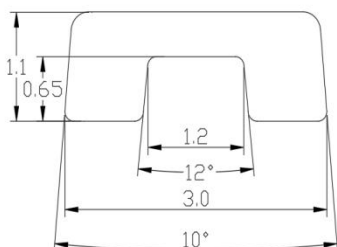
Code:2107210

凸花丝 2.7x1.6



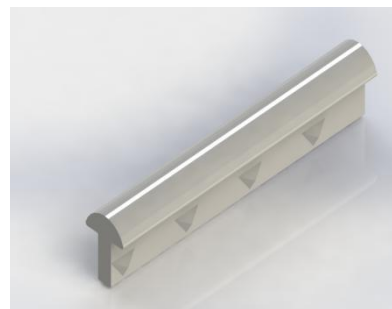
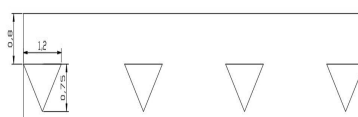
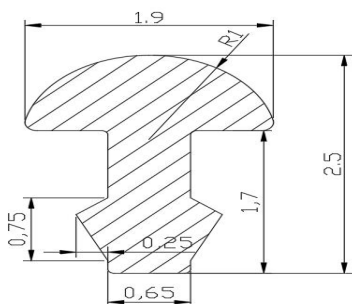
Code:11100012424

凸菱形花丝 3x1.1(1.2x0.65)



Code:20459

凸丝筋上双面三角花丝 1.9x2.5

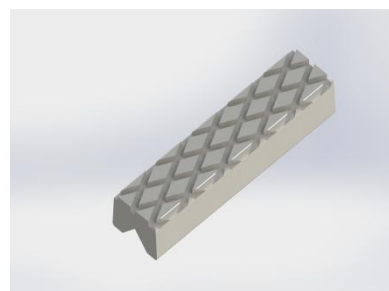
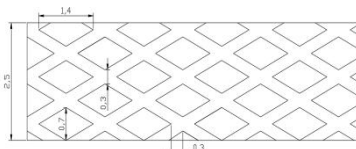
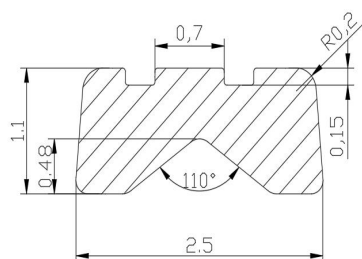




花丝系列
Pattern Series

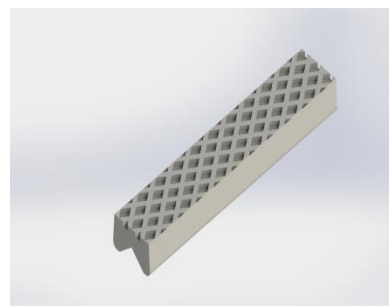
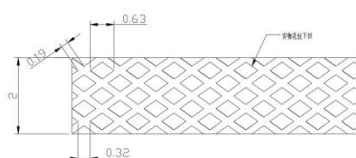
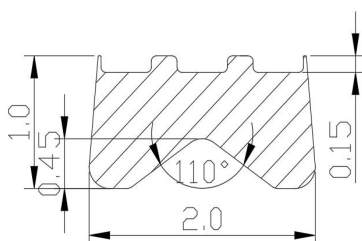
Code:6214310

网格花丝 2.5X1.1



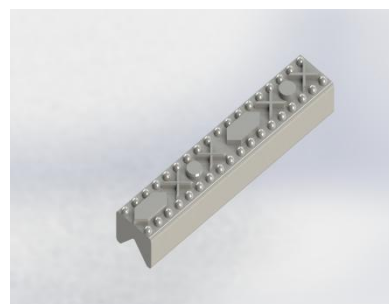
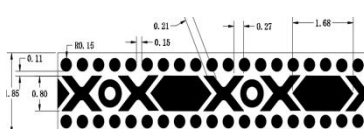
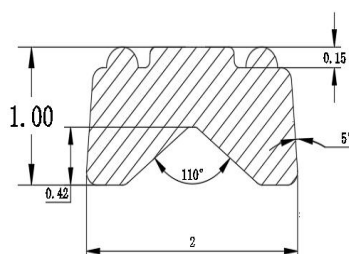
Code:23145

网状花丝 2x1



Code:00241456413

油压花纹 2x1



Code:20061801

圆点花丝大平底 3.4x2.1 (2.2x1.1)

